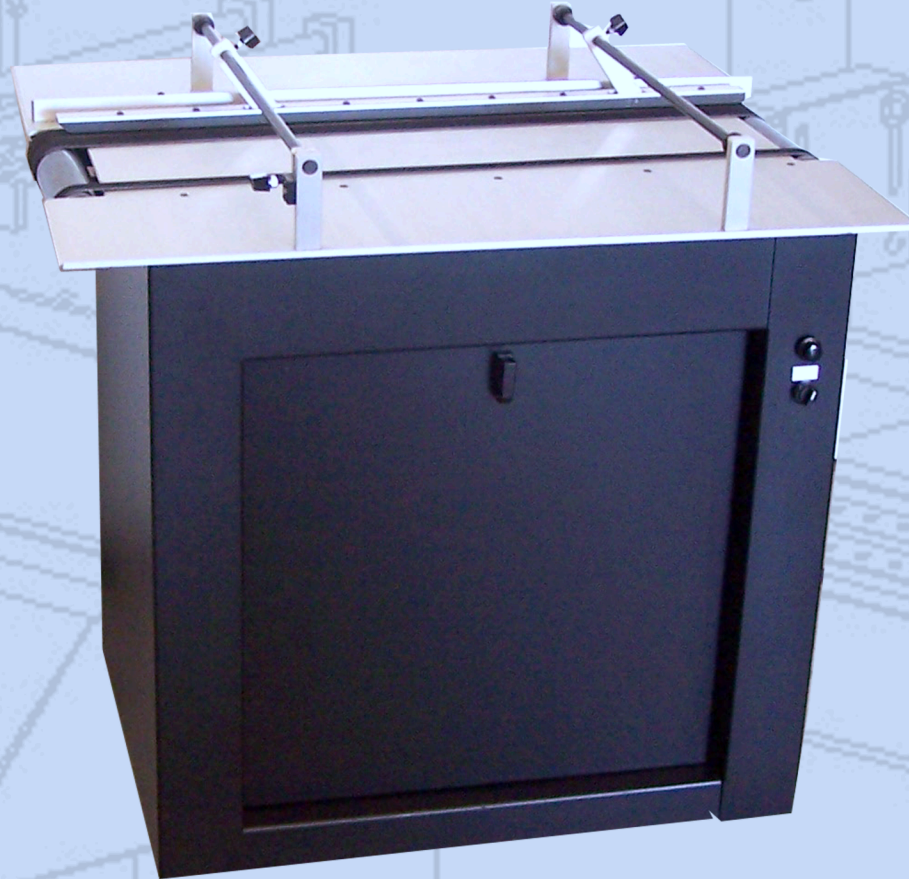




355TA

**COMMERCIAL
SIDE TRAVERSING
ALIGNMENT TABLE**



The 355TA is stand alone side traversing alignment table. The unit can easily register a Wide range of product sizes from 2.0" to 20.0" making it ideal solution for applications requiring perfect registration between feeders and transport equipment.

Features:

- Quick and Easy Setup
- Adjustable Marble Bar
- Variable Speed Transport
- Non-Proprietary Components

Uncompromising Drivetrain:

- High Torque Gear Drive Motor
- Steel Drive Pulleys
- Wide Steel Rollers
- Large Diameter Steel Shafts
- Sealed Shaft Locking Collar Bearings

Specifications:

Material Size: Min. 2" x 3" - Max 20" (In Standard Configuration)

Material Thickness: .375" Max (In Standard Configuration)

Electrical: 110 VAC 1-Phase 10 Amp Circuit

Physical: Overall: 36"L x 38"W x 33-36" H

Options:

Speed Following

This option allows the aligner table to match the speed of other equipment

All Specifications Subject To Change Without Notice



Walco Systems LLC

33588 Pin Oak Parkway
Avon Lake, Ohio 44012

440.930.4850 440.930.4851 (fax)
www.walcosystems.com
email: info@walcosystems.com

Authorized Walco Systems LLC Distributor

